

THE URBAN CLEANING REVOLUTION

Catalogue
Viroc



Catalogue
Viroc

Viroc.

When size matters.

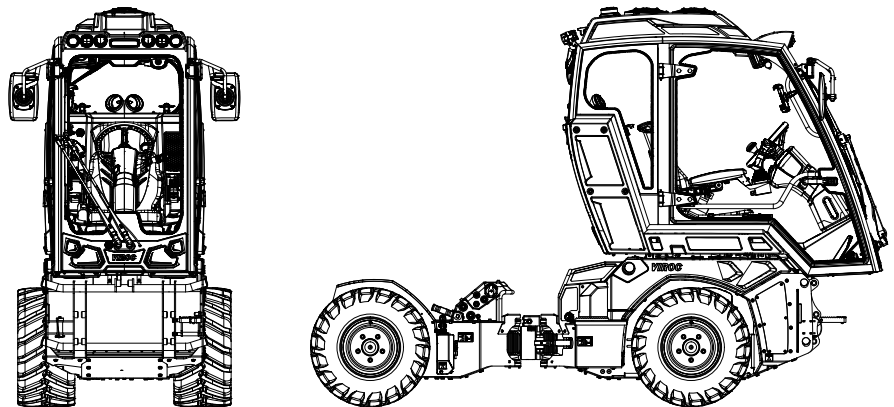
Ultimate Flexibility.
Anytime, anywhere.



Viroc Urban marks the beginning of a **new era in multifunctional urban maintenance**. This tool carrier is designed to handle a wide range of tasks: whether it's cleaning streets, clearing snow, or maintaining parks and green spaces, Viroc Urban is the perfect solution.

Viroc Urban delivers a truly unique user experience where the efficiency of patented systems meets remarkable agility and ease of operation. This machine is a genuine revolution in the offroad sector, made possible by WM technics' combined expertise and innovative spirit.

The innovation starts with the cutting-edge cabin, extends through the flexible system for attaching various accessory units, and culminates in a frame designed for smooth movement over challenging terrain and within urban settings. The multifunction joystick gives you comfortable and intuitive control.



Off-road & urban setting

Easy & intuitive control

Unique usability



The efficiency
that moves the city.

Amid the hustle and bustle of city life, Viroc Urban by WM technics is the unseen hero of the streets. Already hard at work, it handles every task with remarkable agility and precision, keeping streets clean and clear, and parks well-maintained. With its intuitive control and compact design, it's the perfect tool for those who turn the urban environment into a neat and welcoming space, day after day.

Highlights

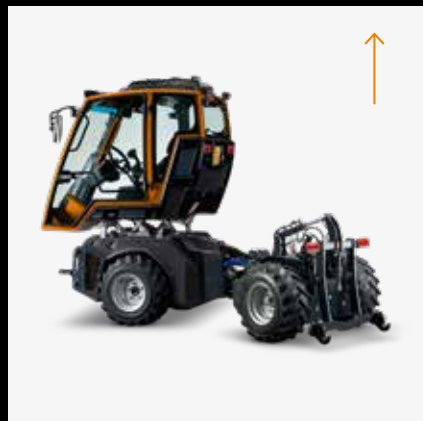
Driver's station

Versatility at its finest: The **innovative cabin** enables operation in all conditions, throughout the year, in both driving directions, and with numerous accessory units.

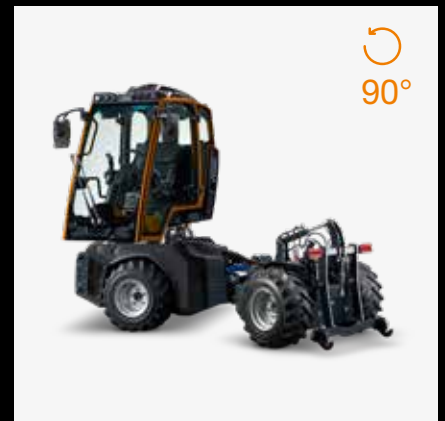
Viroc's driver's station is a true highlight: The cabin frame is made entirely of high-strength aluminum. The cabin is ROPS-certified and can rotate 180°. These features, and many more, make Viroc one of a kind in its class.



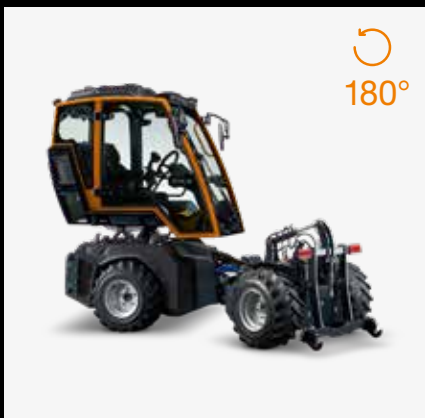
Cabin in driving direction 1



Elevated cabin



Cabin rotation



Cabin locking



Cabin in driving direction 2



180° rotatable cabin

In addition to its high-strength aluminum frame, ROPS certification, low center of gravity, and high safety standards, the cabin has another unique feature: It can be lifted by a hydraulic pump and be rotated 180°. Furthermore, it is decoupled from the frame by four silent blocks for noise and vibration reduction.



Visibility

Due to Viroc's compact build, the driver's station provides outstanding visibility of the attached accessory units, allowing high precision at work. A 110 cm glass door on the side ensures easy access to the driver's seat. At your request, a rear-mounted video camera can be installed for enhanced workflow monitoring.



Multifunction joystick

The ergonomic joystick on the right armrest of the driver's seat enables onehanded control of all functions, ensuring you always maintain control of the engine, drive, and accessory units!



Touchscreen monitor

The high-quality 7-inch display clearly visualizes all relevant operating data. Additionally, functions can be controlled, and operating parameters can be individually adjusted via touch commands.



Air-cushioned seat

Comfortable seating is essential for extended workdays. For this reason, we've equipped Viroc with an ergonomic seat from the premium brand GRAMMER, ensuring maximum comfort during operation.



Protection

To protect you from external pollutants, Viroc is equipped with a Category 4 pressurized cab. Category 4 currently represents the highest protection class, ensuring the best possible operator safety against dust, aerosols, and vapors. The activated carbon filter is designed for easy maintenance and can be replaced with just a few simple steps.



Lighting

Viroc offers a wide range of lighting systems to support your daily work and provides maximum visibility at all times.



Adjustable steering wheel

The steering wheel is adjustable in both height and tilt, enabling the operator to find the most ergonomic position possible.

Highlights

Tires

A diverse selection of tires ensures Viroc is equipped for a **wide variety of uses.**



185/65 – 15
Width Viroc 90 cm



185/65 – 15
Width Viroc 100 cm

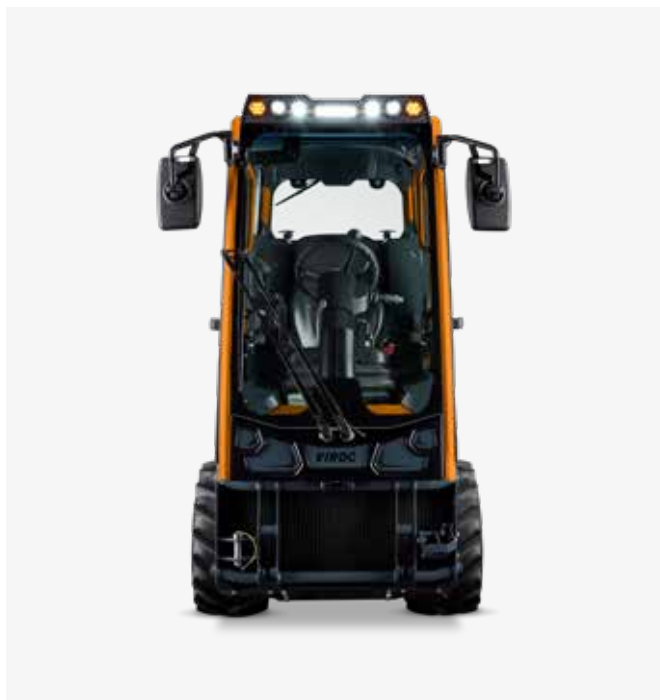


27 x 10.50 – 15
Width Viroc 105 cm



26 x 12.00 – 12
Width Viroc 115 cm

Facts & figures



Viroc VR60

Engine	Diesel Hatz 3H50TICD
Exhaust emission standard	Stage V
No. of cylinders	3
Performance / rpm	43.7 kW (60 hp) / 2,250 rpm
Displacement	1,464 cm ³
Reversible Cleanfix fan	Optional
Standard traction	20 km/h – 13,300 N
Traction (High Torque)	14 km/h – 20,000 N
Standard ground clearance	90 cm: 150 mm 100 cm: 150 mm 105 cm: 175 mm 115 cm: 155 mm
Ground clearance (High Lift)	90 cm: 215 mm 100 cm: 215 mm 105 cm: 240 mm 115 cm: 220 mm

Viroc VR80

Engine	Diesel Hatz 4H50TICD
Exhaust emission standard	Stage V
No. of cylinders	4
Performance / rpm	55.4 kW (75 hp) / 2,250 rpm
Displacement	1,967 cm ³
Reversible Cleanfix fan	Standard
Standard traction	20 km/h – 13,300 N
Traction (High Torque)	14 km/h – 20,000 N
Standard ground clearance	90 cm: 150 mm 100 cm: 150 mm 105 cm: 175 mm 115 cm: 155 mm
Ground clearance (High Lift)	90 cm: 215 mm 100 cm: 215 mm 105 cm: 240 mm 115 cm: 220 mm

General

Drive	Stepless, hydraulic all-wheel drive (0 - 20 km/h) with electronic speed control
Axes	Hydraulic single-wheel drive
Frame	CDC and powder coated high-strength steel frame
Differential lock	Powershift hydraulic differential lock
Steering	Double articulation ($\pm 82^\circ$)
Central joint lock	Central location with patented joint lock system and sensor-controlled wheel monitoring
Service brake	Hydrostatic
Parking brake	Hydraulically controlled negative brakes on all 4 wheels, integrated in the end drives
PTO 1	Can be regulated hydraulically via piston pump in both directions 350 bar from 0 to 83 litres
PTO 2 (optional)	Can be regulated hydraulically via piston pump in both directions 250 bar from 0 to 40 litres
Working hydraulics 1	Gear pumps max. 13.5 litres and 180 bar, electrohydraulic proportional valves
Working hydraulics 2 (optional)	Gear pumps max. 13.5 litres and 180 bar, electrohydraulic proportional valves
Instruments	7" color display with touch function, illuminated keypad with 6 keys
Driver's station	ROPS-tested aluminum Driver's cab; 180° rotatable; steering column adjustable in height and angle; 1 multifunction joystick for operation.
Hand-arm vibrations	< 2.5 m/s ²
Whole-body vibrations	< 0.5 m/s ²
Electric system	12V 60Ah, light system 110A, CAN-BUS and 30 electrical outputs/inputs for accessory units
Fuel tank	36 l
Hydraulic system	40 l of type HVLP 46
Operating temperatures	from -15 °C to +40 °C

Tires

Overall width 90 cm	185/65 - 15 4PR
Overall width 100 cm	185/65 - 15 4PR
Overall width 105 cm	27 x 10.5 - 15 8PR
Overall width 115 cm	26 x 12.00 - 12 8PR

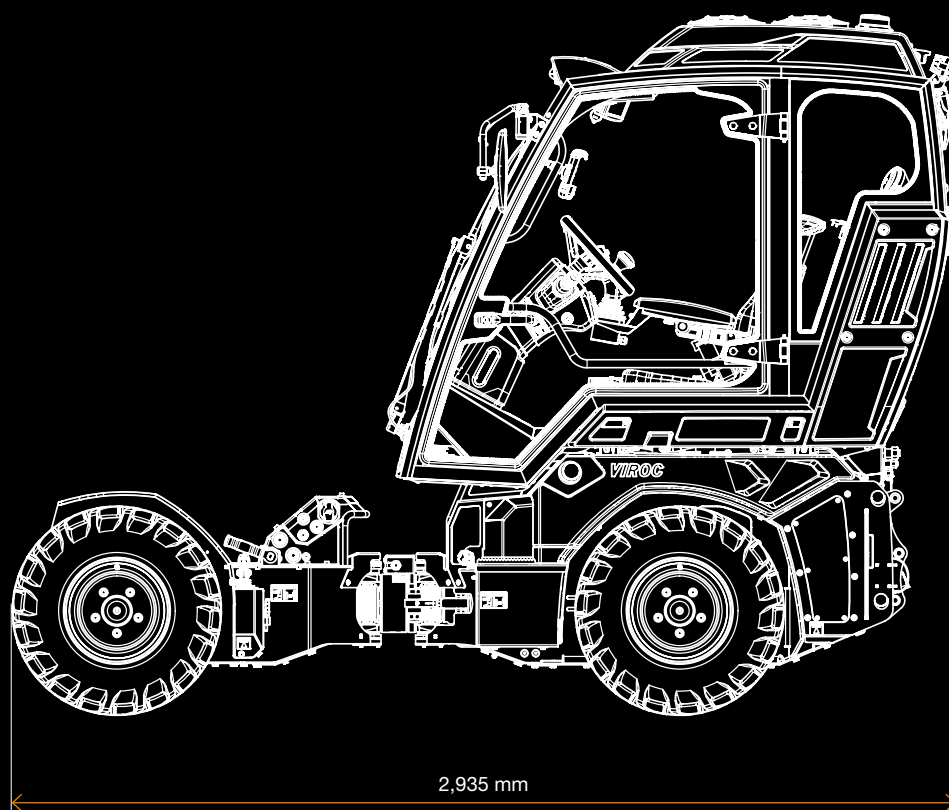
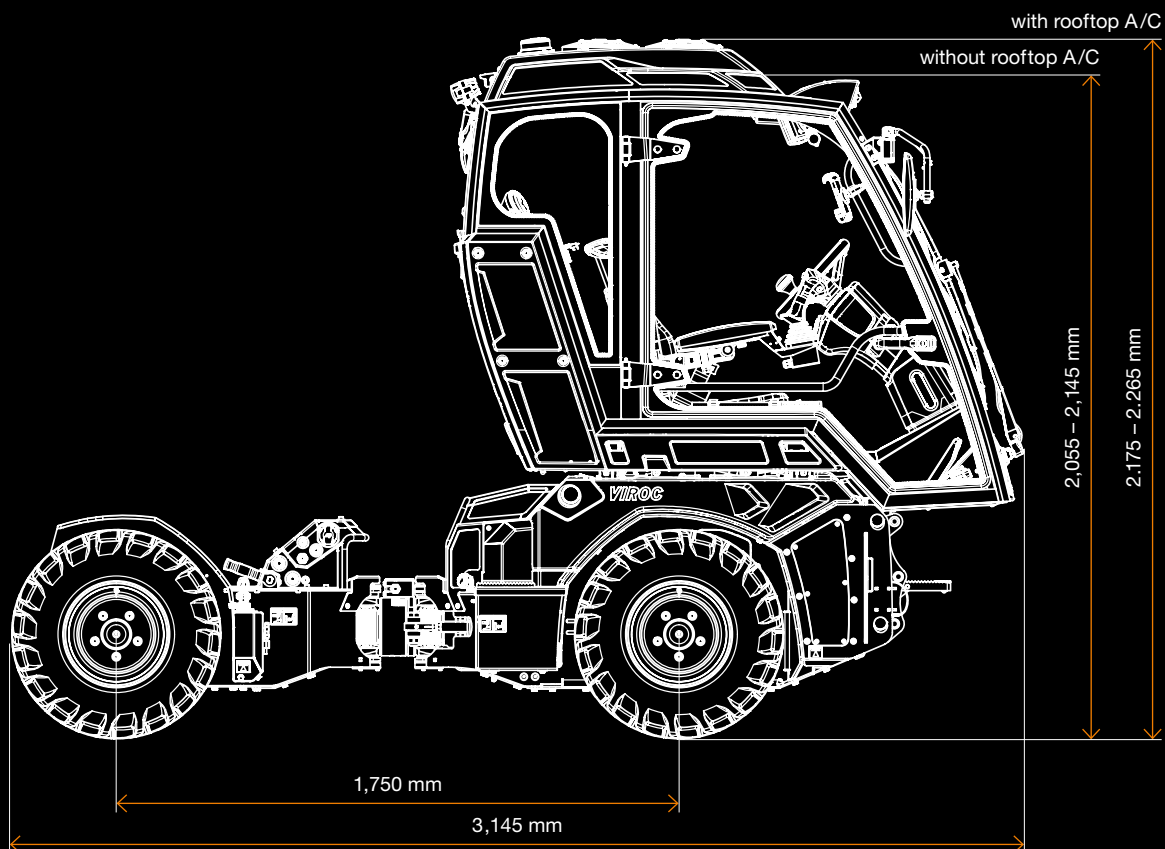
Weight & dimensions

Weight	Basic machine 1,270 kg
Perm. total weight	2,450 kg
Overall length	Driving direction forwards: 3,145 mm
Overall length	Driving direction backwards: 2,935 mm
Height	2,055 – 2,265 mm
Center distance	1,750 mm

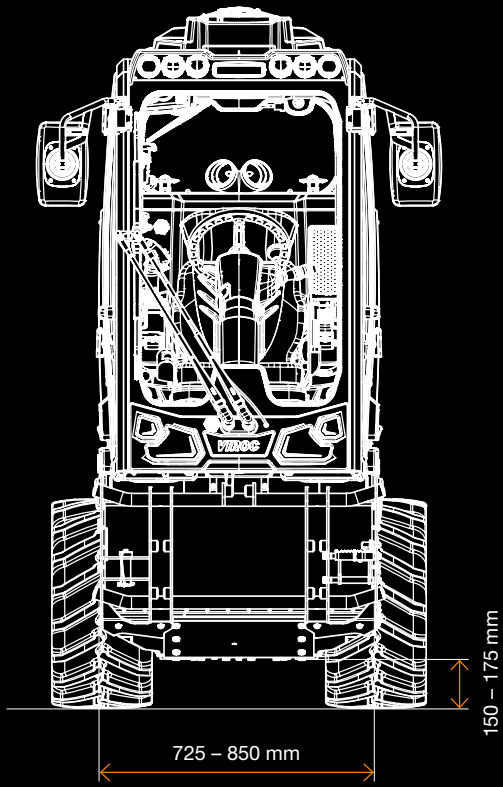
Turning radius

Total width 90 cm	Inner turning radius 585 mm Outer turning radius 1,730 mm Outer track radius 1,420 mm
Total width 100 cm	Inner turning radius 540 mm Outer turning radius 1,730 mm Outer track radius 1,445 mm
Total width 105 cm	Inner turning radius 510 mm Outer turning radius 1,730 mm Outer track radius 1,440 mm
Total width 115 cm	Inner turning radius 455 mm Outer turning radius 1,730 mm Outer track radius 1,465 mm

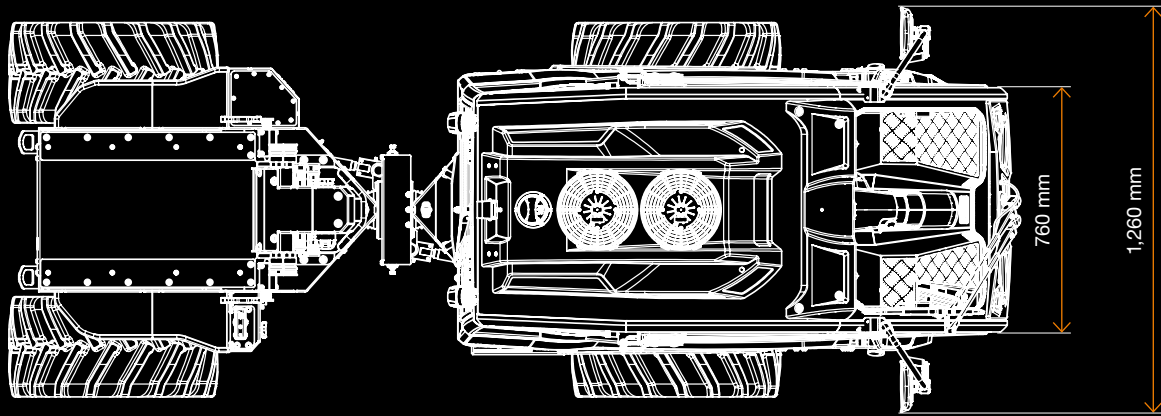
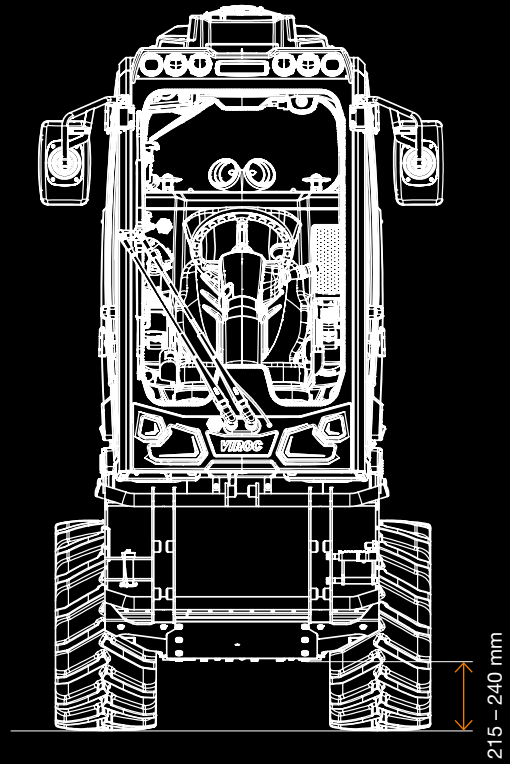
Dimensions



Standard



High Lift

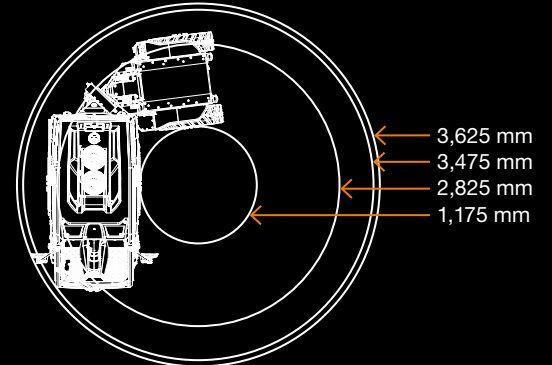
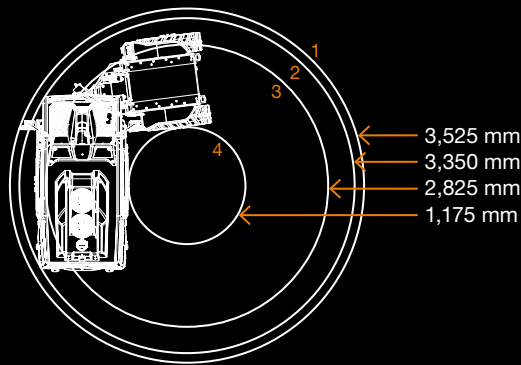


Turning radius

185/65 – 15

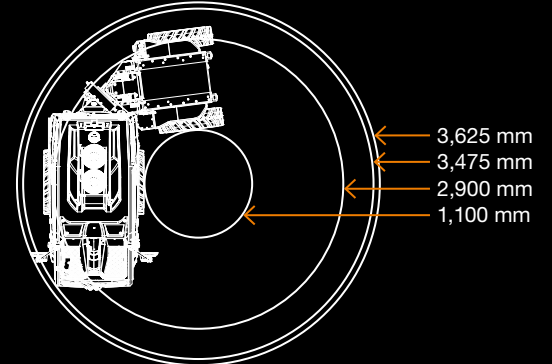
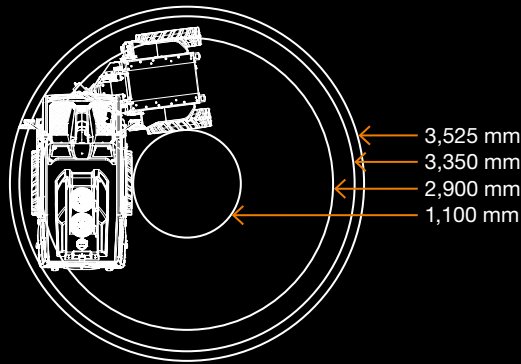
Width Viroc 90 cm

- 1 mirrors unfolded
- 2 mirrors folded
- 3 track width
- 4 inner turning radius



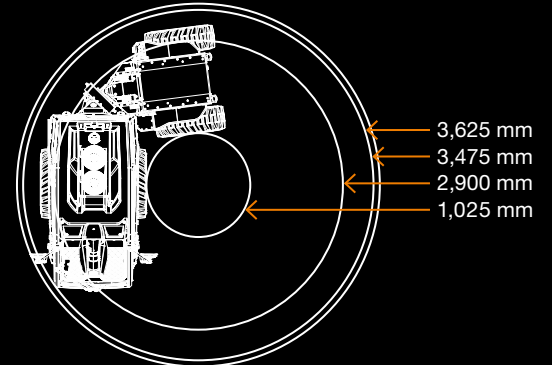
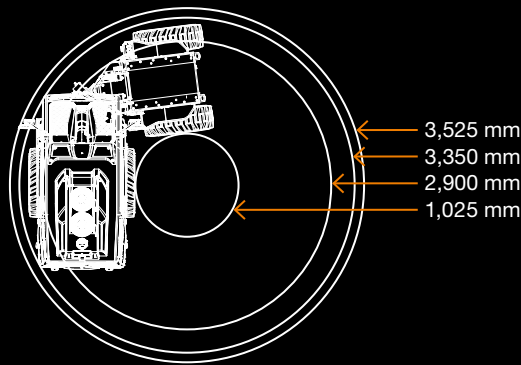
185/65 – 15

Width Viroc 100 cm



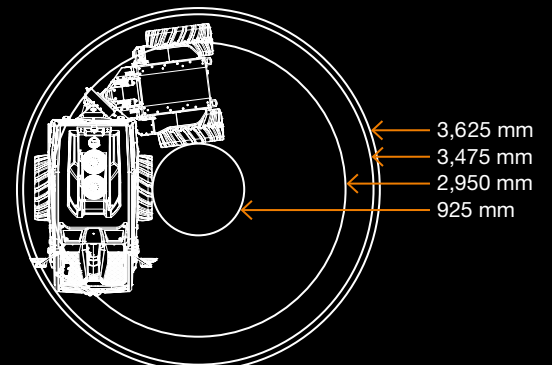
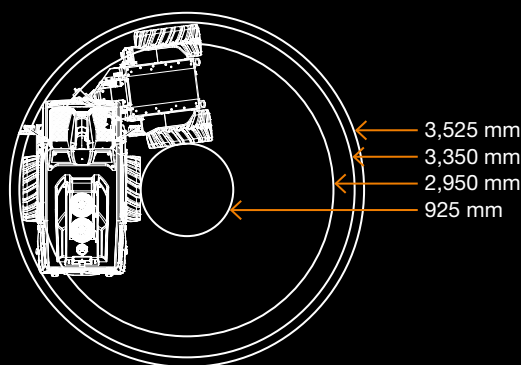
27 x 10.50 – 15

Width Viroc 105 cm



26 x 12.00 – 12

Width Viroc 115 cm



Optionals Viroc

Tailor your Viroc to suit your requirements: Each additional feature boosts your productivity and creates a one-of-a-kind work environment.

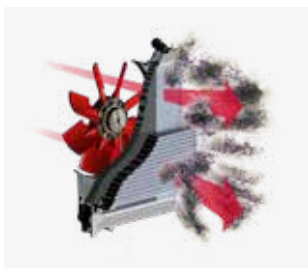


Extended warranty



12 + 48 month

Engine



Cleanfix
reversible fan for
model VR60

(standard on the VR80)

Hydraulic system



Double piston
pump with
3 gear pumps

Operator Environment



14-pin cable feed-through with front and rear ports



Seat heating



Left armrest



DAB radio with hands-free system, Bluetooth & AUX input



Smartphone holder with USB charging port



Rear camera



Switchable 12V socket according to DIN 9680



Front & rear work lights



Lighting for road traffic



High beam



Linkage

With Viroc, you can use third-party accessory units that you already own. The three-point linkage offers a lifting capacity of 1,000 kg at the hooks, providing optimal multifunctionality.



Technical data

Three-point linkage	Cat. 2S ISO 730-1
Minimum lifting capacity at the attachment points	1,000 kg
Recommended max. weight of the accessory	ca. 700 kg
Optional	<ul style="list-style-type: none">• Hydraulic top link• Valve block for 5 free cylinder movements with a maximum of 180 bar & 13,5 l/min
Mounting frame with three-point linkage	<ul style="list-style-type: none">• Cat. 2S Ø 22• Cat. 2S Ø 28• Fendt Ø 22

Configuration



Linkage with hydraulic block



Three-point mounting frame Cat. 1



Three-point mounting frame Cat. 1, pivotable (15°) and with side shift



Hydraulic top link



Quick-release hooks for linkage Cat. 2S, Ø 22



Quick-release hooks for linkage Cat. 2S, Ø 28



Quick-release hooks for linkage type Fendt Ø 22



Double-acting hydraulics (1-2-3-4)



Buttons for external operation



Switchable 12V socket according to DIN 9680



PTO 1 OMS 80 cc (using 1 piston pump)



PTO 2 OMT 160 cc (For high-performance accessory units where both piston pumps are used to drive a PTO)



Parking jacks

Linkage available with

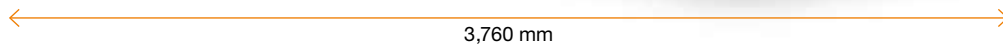


Loader bucket

Accessory

Loader bucket

With the loader bucket, digging and transport tasks in confined spaces become nothing more than an efficient breeze.



Technical data

Width	<ul style="list-style-type: none">• 900 mm• 1,200 mm
Load capacity	<ul style="list-style-type: none">• 0.16 m³• 0.21 m³



Accessory

Front linkage

Viroc guarantees top-tier versatility and productivity for every operation. The front linkage enhances multitasking capabilities, enabling you to perform two operations in one go.



3,370 mm

Technical data

Lifting capacity at the attachment point	650 kg
Recommended max. weight of the accessory	200 - 300 kg with minimal overhang & appropriate rear counterweight
Three-point linkage	A-frame for Category 0
Optional	<ul style="list-style-type: none">• Hydraulic top link• Valve block for up to 5 independent cylinder movements with max. 180 bar & 13,5 l/min• Continuous flow



Configuration



Front linkage with Category 0 A-frame



Hydraulic power unit & 12V socket



Continuous hydraulic flow



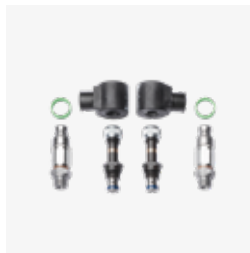
Hydraulic top link



Ports for the second gear pump



Ports for the PTO



Double-acting hydraulics (1-2-3-4)





Accessory

Implement mast

The implement mast sets new benchmarks for multifunctionality in farming. It allows you to mount various accessory units, including the flail mower or trimmer, and position them according to your needs. The implement mast takes your productivity to a new level, offering an all-in-one solution for diverse tasks.



Technical data

Stroke length of the main telescope	600 mm
Tilt angle of the main telescope	± 25°
Tilt angle of the swivel system	± 120°
Stroke length of the 2nd telescope	500 mm
Weight	155 kg

Configuration



Implement mast with hydraulic block unit & additional hydraulic functions



Swivel system with 500 mm telescope



Quick rotation system (180°)



Quick-release system for the telescope



Parking jacks

Available with flail mower



Mower model SM80 with a working width of 80 cm



Mower model SM90 with a working width of 90 cm



Hydraulic shoot remover
(on request: individually controllable brush)



Parking jacks

Accessory

Flail mower

Thanks to our implement mast, our flail mower transforms into a multipurpose mulching device or a boom-mounted verge mower for cutting at various heights and depths. If combined with the hydraulic shoot remover, the mower can also be used for comprehensive maintenance between rows of any type, eliminating the need for tedious manual work.



Technical data

Operating width	800 mm or 900 mm
Working rpm	2,000 - 3,000 rpm
Hydraulic system for flail mower axle	min. 35 l/min at 250 bar
Necessary hydraulics for cylinder movement	min. 10 l/min at 130 bar
Weight	450 kg



Dumper skip

The Dumper skip ensures safe transport of bulk materials thanks to its large capacity.



← 3,320 mm →

Technical data

Width	800 mm
Length	1,100 mm
Panel height	730 mm
Weight	192 kg
Load capacity	540 l



Configuration



Dumper
mod. DPK 540



Frame with
hydraulic tilt
function



Rear lights for
road traffic



Parking jacks

On the tool carrier (1)



Implement mast



Loading platform



Dumper skip



Rear mounting area (2)



Linkage



Loader bucket



Mower

Front hitch (3)



Front linkage



Brush



Snowplow blade



Shears lawnmower

WM technics GmbH

Breiner Straße 15
I-39053 Blumau
T. +39 0471 353 332
info@wm-technics.com
wm-technics.com

Follow us on

YouTube: *WM urban*
Facebook: *WM urban*
Instagram: *WM urban*
LinkedIn: *WM technics*

